

# For Lease

**Prime opportunity for retail**

100 1re Rue, Thetford Mines, QC

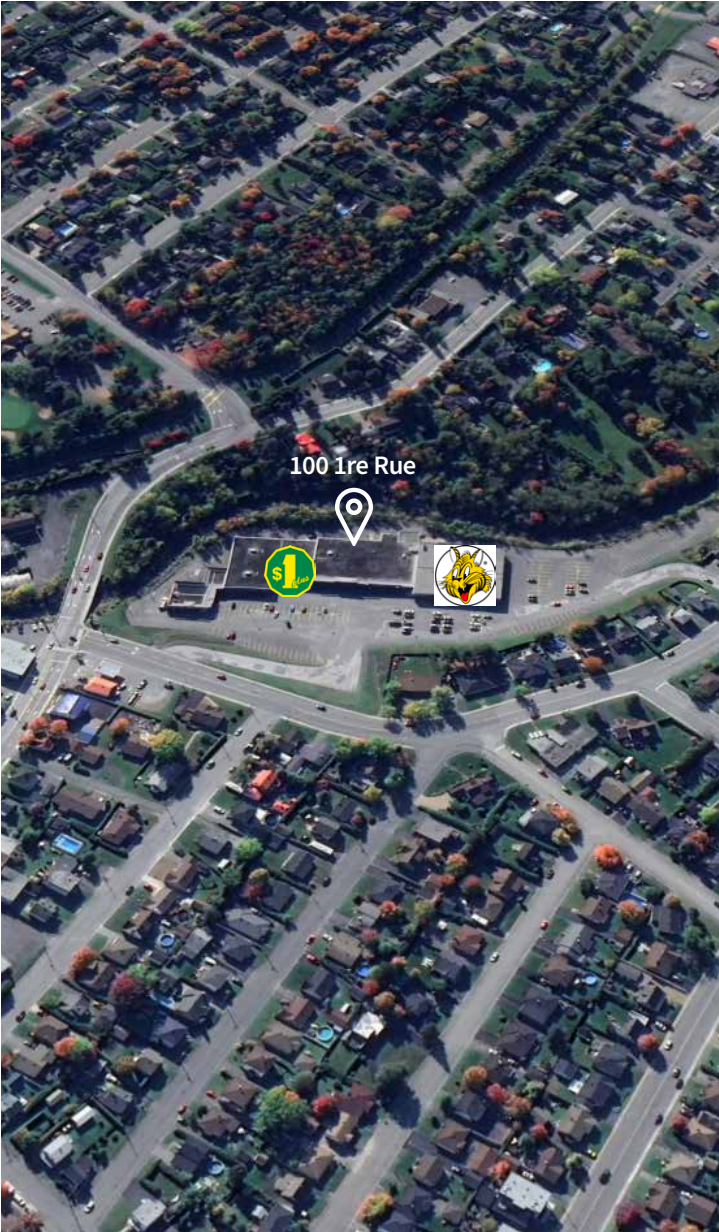


# Overview

Situated in a strip mall, anchored by well-known retailers such as Giant Tiger, Dollarama and Mr.Puffs. Located at the intersection of 1re Rue and Notre-Dame, a main street running through Thetford Mines. This center is frequently visited by the surrounding residents and is sure to bring great traffic to your business.

### PROPERTY DETAILS

SQUARE FOOTAGE
UNIT 2 : 950 SF
UNIT 3 : 1,181 SF
UNIT 4 : 3,926 SF
UNIT 5 : 3,354 SF
UNIT 6: 1,973 SF
UNIT 10: 787 SF
UNIT 12: 459 SF
UNIT 14: 778 SF
UNIT 15: 536 SF
UNIT 16B: 1,500SF
ADDRESS
100 1RE RUE, THETFORD MINES, QC
AVAILABILITY
Immediately
BASIC RENT
Contact listing brokers
ADDITIONAL RENT (2022)
\$4 psf



100 1re Rue

### PROJECT HIGHLIGHTS









Anchors include Giant Tiger, Dollarama and Mr.Puffs



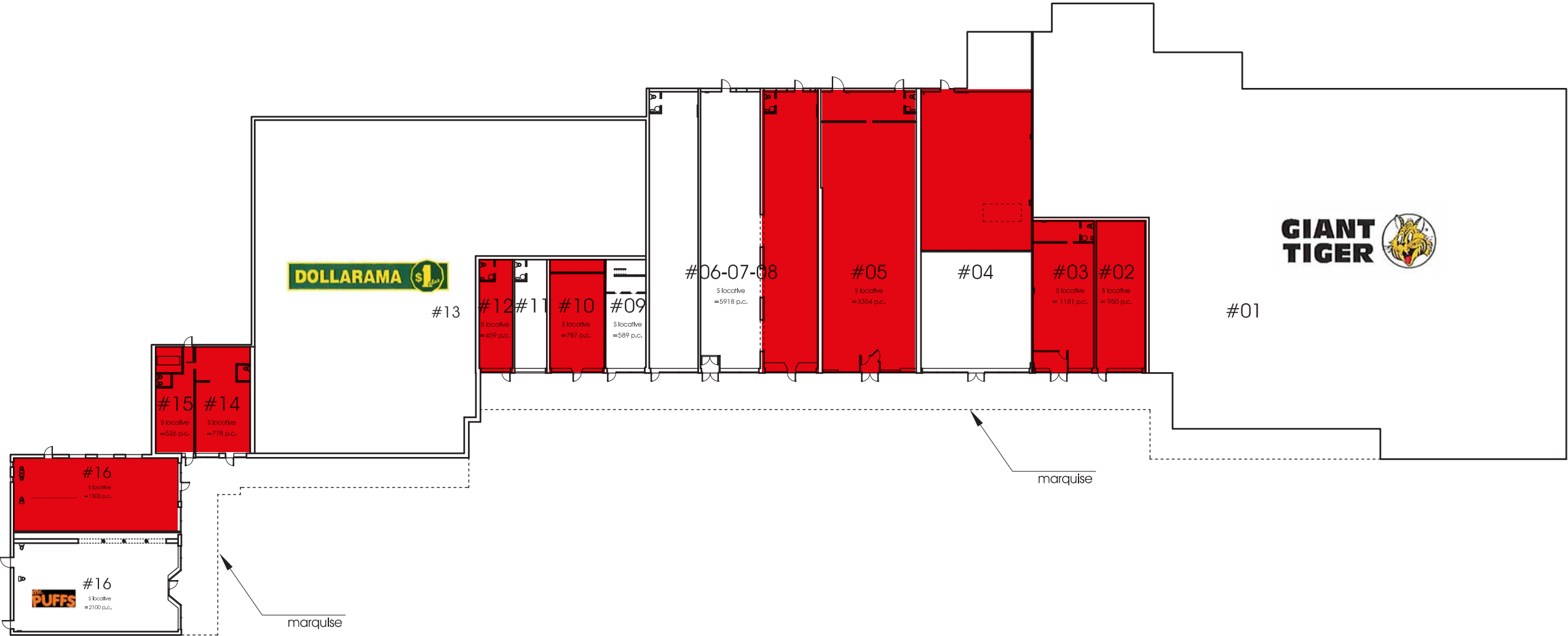
Parking spaces available

# Area Demographics

Source: Statistics Canada, 2021

	1KM	3KM	5KM
 Total Population	5,707	16,602	19,247
 Daytime Population	5,481	18,273	21,369
 Median Age	53.1	53.2	52.7
 Total Households	2,986	8,395	9,579
 Average HH Income	\$66,888	\$69,506	\$71,273
 Total Expenditure (Per Household)	\$63,869	\$67,110	\$69,099

# Floor Plan



100, 1<sup>re</sup> rue ouest



## Nearby Retailers





## Contact

### **Manon Larose\***

Senior Vice President, Retail  
+1 438 990 8968  
Manon.Larose@am.jll.com

### **Michelle Marcotte-Blart\*\***

Sales Associate, Retail  
+1 514 972 6163  
Michelle.Marcotte@am.jll.com



Although information has been obtained from sources deemed reliable, JLL does not make any guarantees, warranties or representations, express or implied, as to the completeness or accuracy as to the information contained herein. Any projections, opinions, assumptions or estimates used are for example only. There may be differences between projected and actual results, and those differences may be material. JLL does not accept any liability for any loss or damage suffered by any party resulting from reliance on this information. If the recipient of this information has signed a confidentiality agreement with JLL regarding this matter, this information is subject to the terms of that agreement. ©2022. Jones Lang LaSalle IP, Inc. All rights reserved. \*Chartered real estate broker, DA \*\* Commercial real estate broker